

domonial

control panel

the ultimate intruder alarm systems



Domonial Control Panel

Domonial is a compact, wireless security system for the home or small office. Its modular capability provides for complete convenience and is easily installed or reinstalled, in the event of moving house or premises.

- Completely wireless system
- Modular system components for ease of installation
- Ultra-safe, narrow band radio frequency
- Remote diagnostics and maintenance for routine inspections
- Up to 10 users with PIN and TAG

***Residential and Small
Commercial Solutions***

Wireless Peripherals for Domonial Intruder Alarm Control Panel

Domonial control panel - designed for your home

- A high performance, ultra compact alarm control panel suitable for up to 20 zones
- A completely wireless range of accessories means swift, no fuss installation
- Developed with low power consumption in mind, for optimum battery life
- The Domonial features built-in communications for connection to alarm receiving centre or signalling to nominated number, PSTN or GSM
- Full set, part set and annex set options to suit your lifestyle
- For added peace of mind - the Domonial features a built-in speaker/microphone to link with the alarm receiving centre
- Remote diagnostics and maintenance for routine inspections and alarm activations
- Away-from-home facility to check system status and listen in

Keypad with Proximity ID card-reader

- Wireless keypad
- TAG or PIN operation
- Signals to wireless relays linked to remotely operated peripherals



(85x135x25mm)

Wireless Keyfob

- 4 button fob
- Can full and part arm and disarm
- Signal to wireless relays linked to remotely operated peripherals



(38x88x19mm)

LCD Display Keypad

- Wireless keypad
- Alphanumeric back-lit display
- 17 buttons



(142x121x33mm)

Wireless Internal Sounder

- 107 dB siren level
- Progressive or programmable sound level
- Typical battery life of 4 years



(165mm dia)

Wireless Glassbreak Detector

- 7.5 metre range
- 360 degree coverage
- Test mode and LED display

(108x80x43mm)

Wireless External Sounder

- 107 dB siren level
- Progressive or programmable sound level
- Strobe warning light
- Typical battery life of 4 years



(357x214x70mm)

Wireless Universal Contact

- Small, discrete unit
- Magnetic break for alarm activation
- Option to hard wire to other units for alarm activation



(35x120x26mm)

Wireless relay with wired inputs

- Wireless input/ output device
- 2 Amp rated Relay with N/C + N/O
- Operation by Detector, Keypad, Telephone or SMS

(80x150x50mm)

Wireless PIR Detector

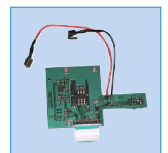
- PIR range 12x12 metre
- Look down lens for full coverage
- User test facility



(70x130x52mm)

GSM Communications Module

- Plug on module for Domonial control panel
- Transmit alarms via GSM
- Receive and transmit audio broadcasts from control panel speakers via GSM
- Achieve remote servicing without PSTN phone line via up/download programming with DomoStation



(175x51x40mm)

Wireless Smoke Detector

- Covers 50 square metre area
- Trips at 57 C or when smoke detected
- LED light show status



(127mm dia x 51mm)

Residential and Small Commercial Solutions